

# **BRS - Baggage Reconciliation System**

**Edge Airport France**



## Table of Contents

<b>EN_EAF_PUB_BRS_201604-002_Plaqtech</b>	.....
<b>BRS - Baggage Reconciliation System</b>	.....
<i><b>Baggage information management</b></i>	.....
<i><b>Mobile terminal</b></i>	.....
<i><b>Workstation</b></i>	.....
<i><b>Functional Architecture</b></i>	.....
<b>Edge Airport France</b>	.....



# EN\_EAF\_PUB\_BRS\_201604-002\_Plaqtech

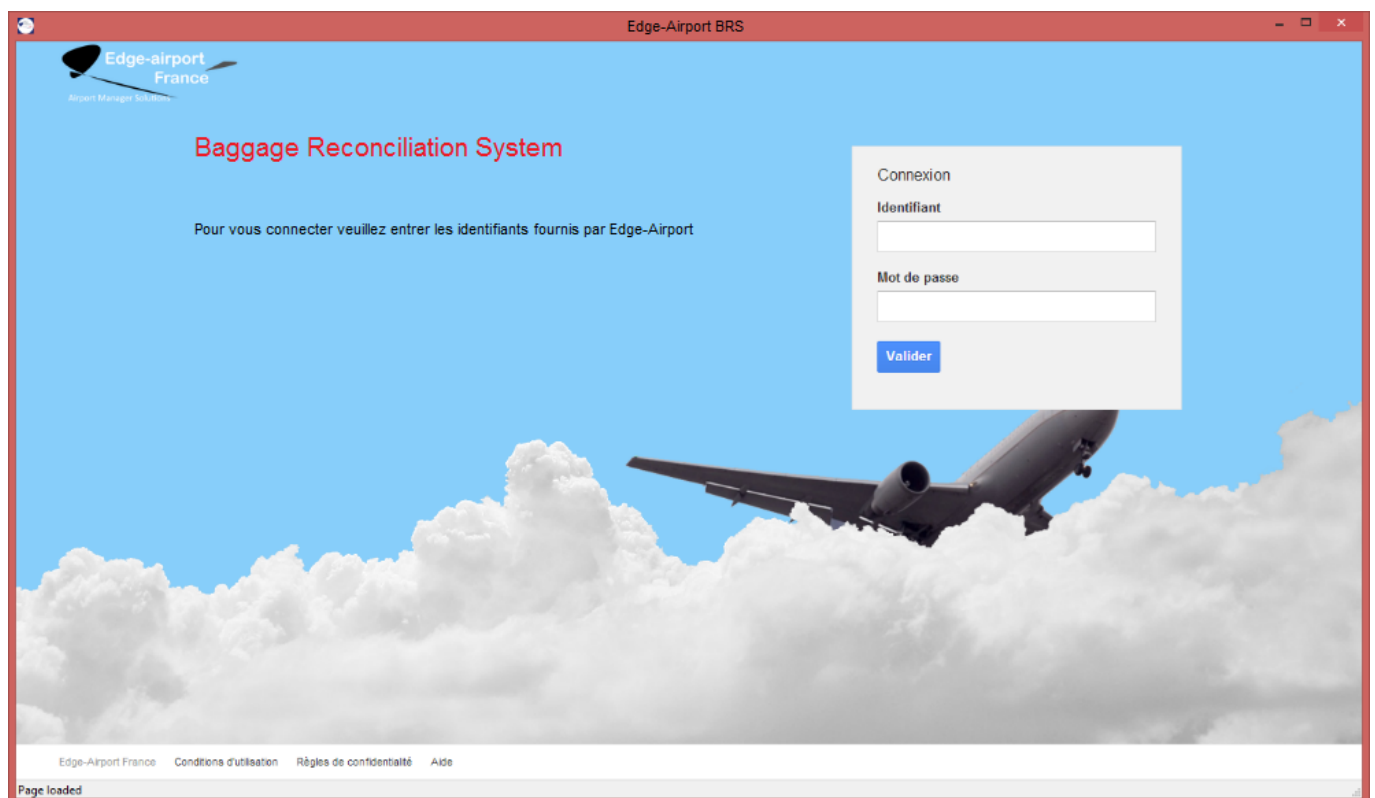
[Original file](#)

## BRS - Baggage Reconciliation System



BRS (Baggage Reconciliation System) is a complete system of reconciliation and baggage tracking. It enables a better service to airlines and airports by improving the safety, speed and traceability of luggage.

Based on the latest technologies, it allows to trace each checked or in -transit baggage, with a corresponding flight and passenger.



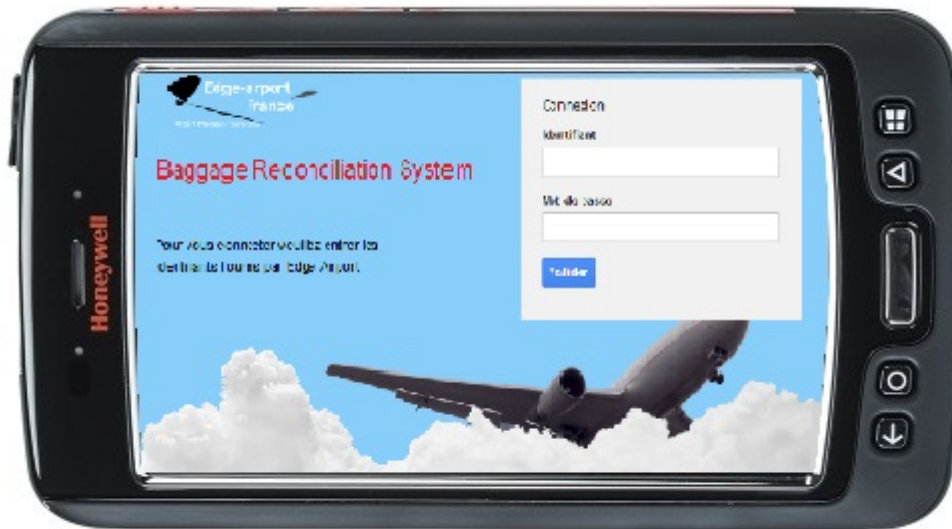
## Baggage information management

BRS allows the retrieval of baggage and passenger information for any airline which sends baggage messages (IATA standard). It ensures the correspondence between baggage and flight information received by AODB and allows the baggage tracing throughout its journey. BRS can send baggage messages to airlines at any time (tracking and manifest).

## Mobile terminal

Through the use of mobile terminals with bar code scanners, baggage handlers have access to real-time information and provide assistance in locating baggage, loading and unloading containers (ULD, Unit Load Device), etc.

They can also work in offline mode (for distant parking spaces).



## Workstation

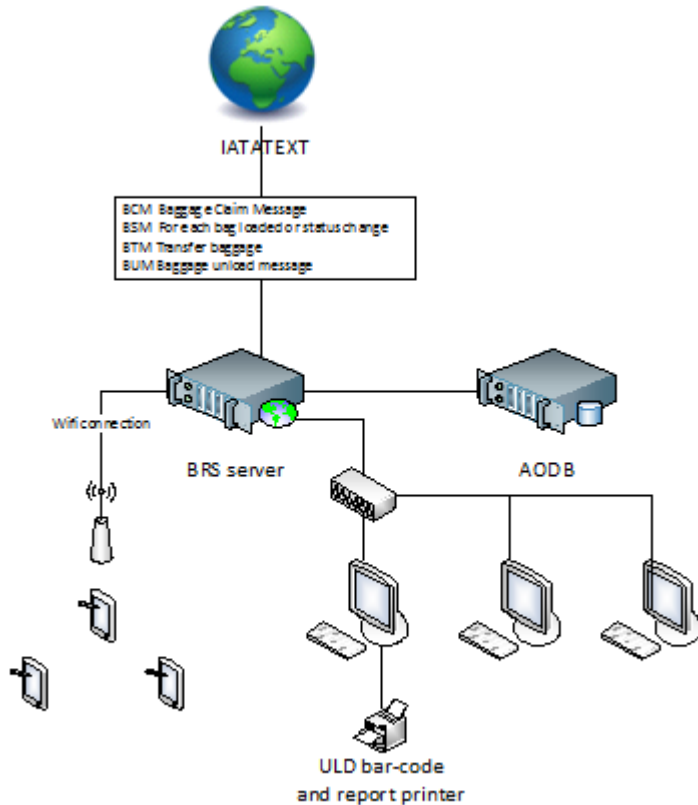
BRS workstation allows supervisors to assign a container, to monitor the progress of baggage loading, baggage cancellation, reprint damaged baggage tag and perform follow-up operations and reconciliation of luggage. They can also print baggage manifest at any time.

## Functional Architecture

The BRS is composed of different modules :

1. an IATATEXT interface, to receive and send baggage messages :
  1. BCM Baggage Claim Message,
  2. BSM Baggage Status Message,
  3. BTM Baggage Transfer Message,
  4. BUM Baggage Unload Message;
2. an AODB interface, for coupling the baggage messages with the flight information;
3. a database server that links the baggage information with the passenger data.

A web server that distributes information to client stations (PDAs, workstations, displays ...).



From: <https://oldwiki.embross-airport-services.com/> - **Documentation Embross (ex Edge Airport)**

Permanent link: <https://oldwiki.embross-airport-services.com/doku.php?id=en:solutions:brs&rev=1504794090> 

Last update: **07/09/2017 16:21**

# Edge Airport France

## Airport Manager Solutions

**Phone: +33 553 801 366**

**Service commercial : [contact@edge-airport.com](mailto:contact@edge-airport.com)**

**Support technique : [support@edge-airport.com](mailto:support@edge-airport.com)**

**Edge Airport France SAS au capital de 150 000 €**

**RCS Bergerac 529 125 346 Les Lèches TVA : FR53529125346 / EORI : FR52912534600039**

**Tel : +33(0)553 801 366 [contact@edge-airport.com](mailto:contact@edge-airport.com) [www.edge-airport.com](http://www.edge-airport.com)**