

Cupp-T - IATA CUPPS Platform

Edge Airport France

Table of Contents

EN_EAF_PUB_CUPPT_201604-002_PlaqTech
 {{cuppt_Image_0.png}}
 CUPP-T
 IATA CUPPS Platform
 Common Use Passenger Processing Technology
 General
 Simple to Use Interface
 Features
 Configuring Peripherals
 Naming standard of peripherals as per IATA/CUPPS norm
 Competitive opening
 Example of ALTEA
 {{cuppt_Image_6.png}} SuperVision
 Supervision Station
 Edge Airport France

EN_EAF_PUB_CUPPT_201604-002_PlaqTech

[Original file](#)

{{cuppt_Image_0.png}}

CUPP-T

IATA CUPPS Platform

Common Use Passenger Processing Technology

IATA recommended practice 1797

1. Security:
 1. authentication of the users;
 2. only applications authorized by the platform can be run;
 3. secure access to printers, boarding card readers and other peripherals.
2. Interoperability & compatibility:
 1. portable applications Load and Play (LnP);
 2. web hosted applications;
 3. permits the use of peripherals without proprietary firmware.
3. IATA / CUPPS certified

General

Cupp-T is a high-performance platform which facilitates airlines, ground handlers or other operators to share common physical check-in, gate or back and front-office positions, and the associated peripherals, improving the efficiency of airport resources.

Airport Manager Cupp-T supports any CUPPS compliant application including but not limited to:

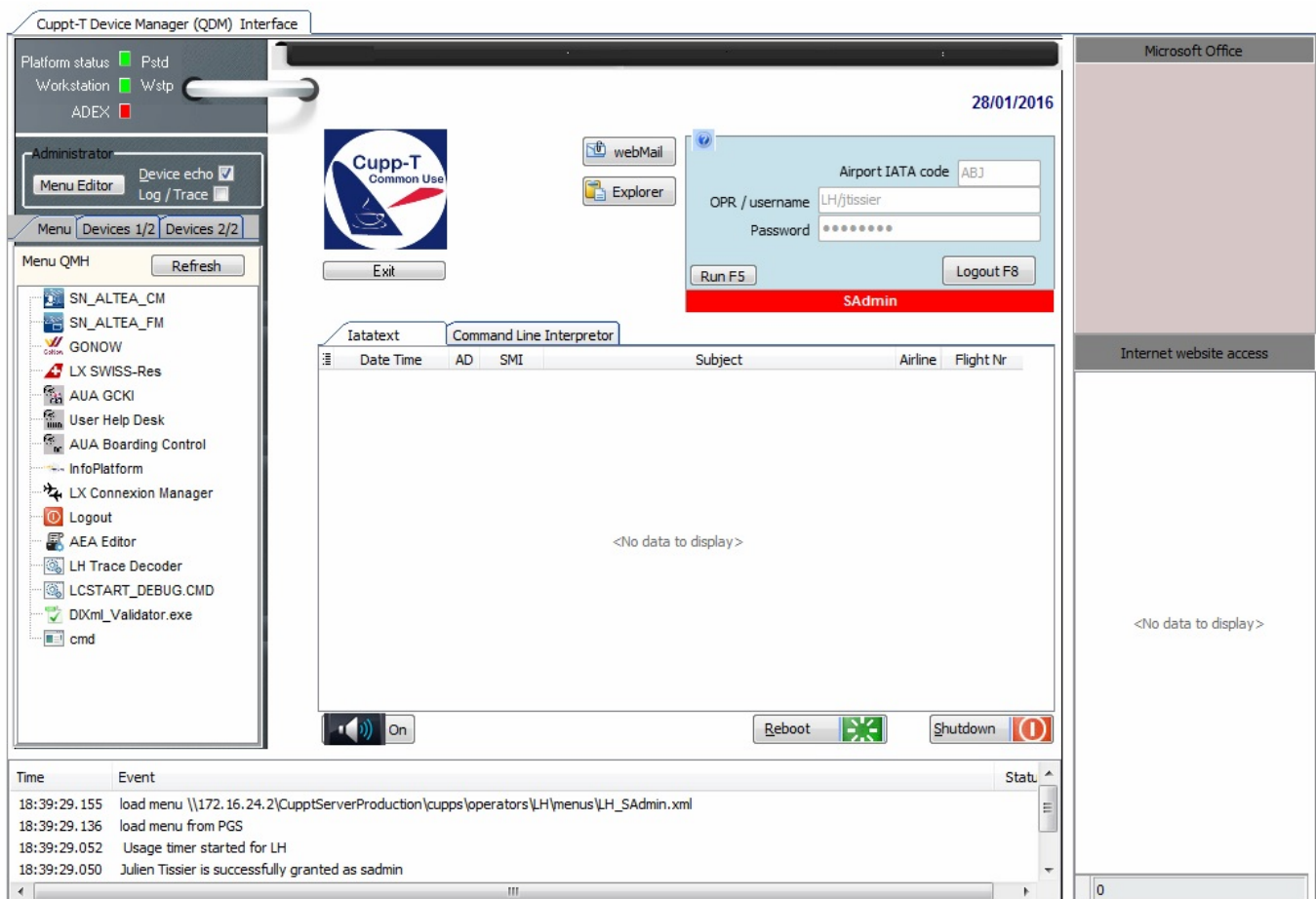
1. DCS (Departure Control System) for airlines;
2. Local-Departure Control System like Airport Manager L-DCS;
3. Back office Applications;
4. Other Operational Applications.

Certified to IATA / CUPPS version 01.03 revision 9.

Supports the all major DCS for airlines:

1. ALTEA ©Amadeus
2. GAETAN ©Air France
3. Lufthansa Cute Future ©Brussels Airlines
4. MACS © Emirates
5. TROYA © Turkish Airlines
6. Local DCS Airport Manager used by Air Corsica and many lowcost airlines like Ryanair, flyBE, Transavia, EasyJet, etc
7. all DCS applications conforming to the IATA / CUPPS norm.

Simple to Use Interface



Cuppt-T: A modern and secure interface. In secure mode, only administrators have access to 'Windows' desktop.

Features

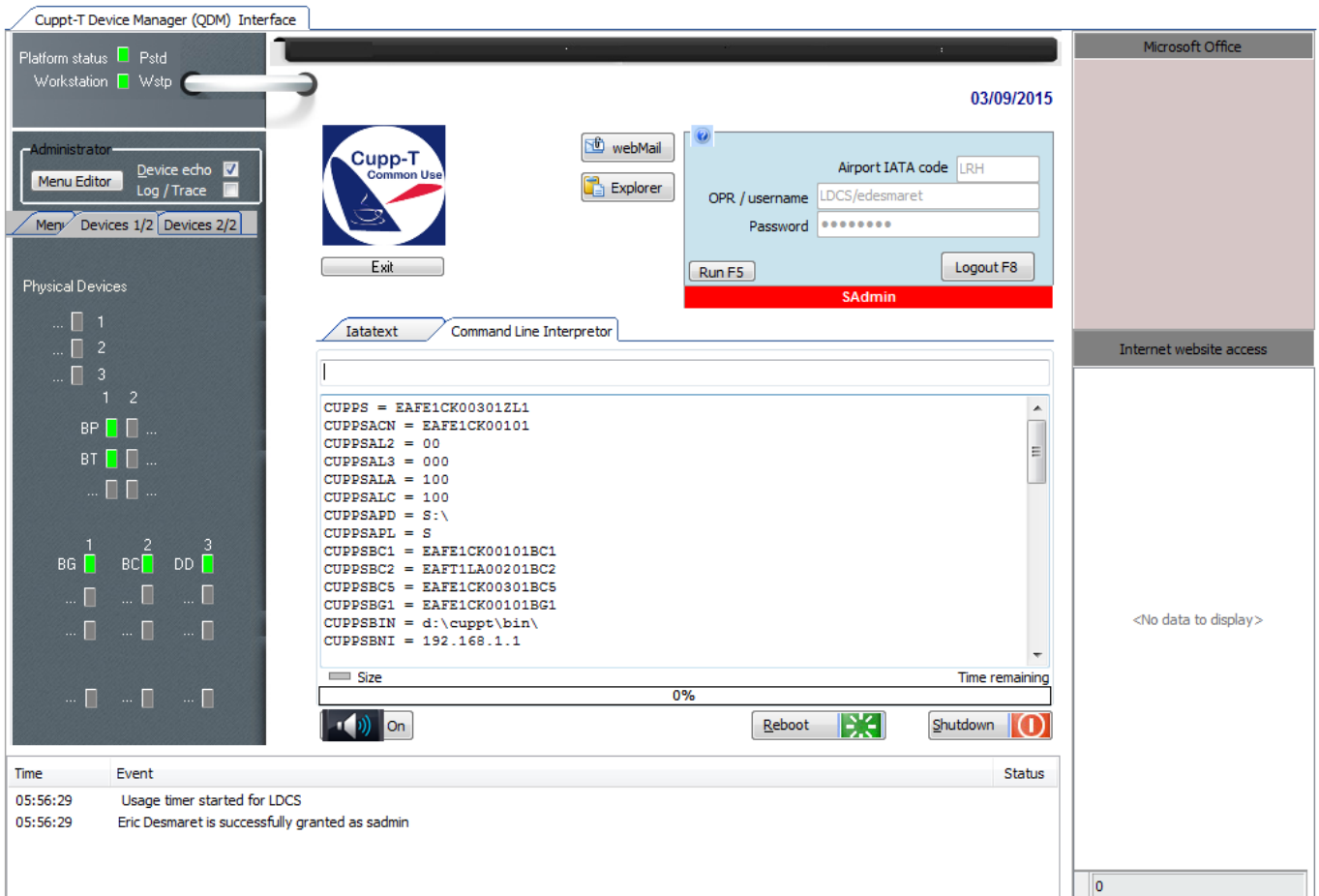
In addition to hosting airline applications, Cuppt-T offers advanced functions:

1. launching Microsoft office applications – Word, Excel, PowerPoint, etc.;
2. controlled access to a list of websites defined by the system administrator;
3. dynamic creation of multiple menus per operator and per user group;

4. controlled access to webmail;
5. configuring devices in just a few clicks.

Configuring Peripherals

Cuppt-T allows system administrator to manage the devices.



The screenshot displays the Cuppt-T Device Manager (QDM) Interface. On the left, there is a 'Physical Devices' panel with a tree view showing various device categories like BP, BT, BG, BC, and DD, each with sub-items 1, 2, and 3. The main area features a 'Cuppt-T Common Use' logo and an 'Administrator' section with options for 'Menu Editor', 'Device echo', and 'Log / Trace'. A central configuration window is open, showing fields for 'Airport IATA code' (LRH), 'OPR / username' (LDCS/edesmaret), and 'Password'. Below these are 'Run F5' and 'Logout F8' buttons, and a red bar at the bottom indicates the user is 'SAdmin'. A 'Command Line Interpreter' window is also open, displaying system variables such as CUPPS, CUPPSACN, CUPPSAL2, CUPPSAL3, CUPPSALA, CUPPSALC, CUPPSAPD, CUPPSAPL, CUPPSBC1, CUPPSBC2, CUPPSBC5, CUPPSBG1, CUPPSBIN, and CUPPSBNI. At the bottom, there is a taskbar with 'Reboot' and 'Shutdown' buttons, and a log window showing events like 'Usage timer started for LDCS' and 'Eric Desmaret is successfully granted as admin'.

Naming standard of peripherals as per IATA/CUPPS norm

BP	Boarding Pass Printer	MS	Magnetic Swipe reader
BT	Bag Tag Printer	OC	Optical Character reader
BG	Boarding Gate reader	PR	Document Printer
BC	Bar Code Reader		
DD	Display Device		

The configuration of a device takes a few clicks using the following window:



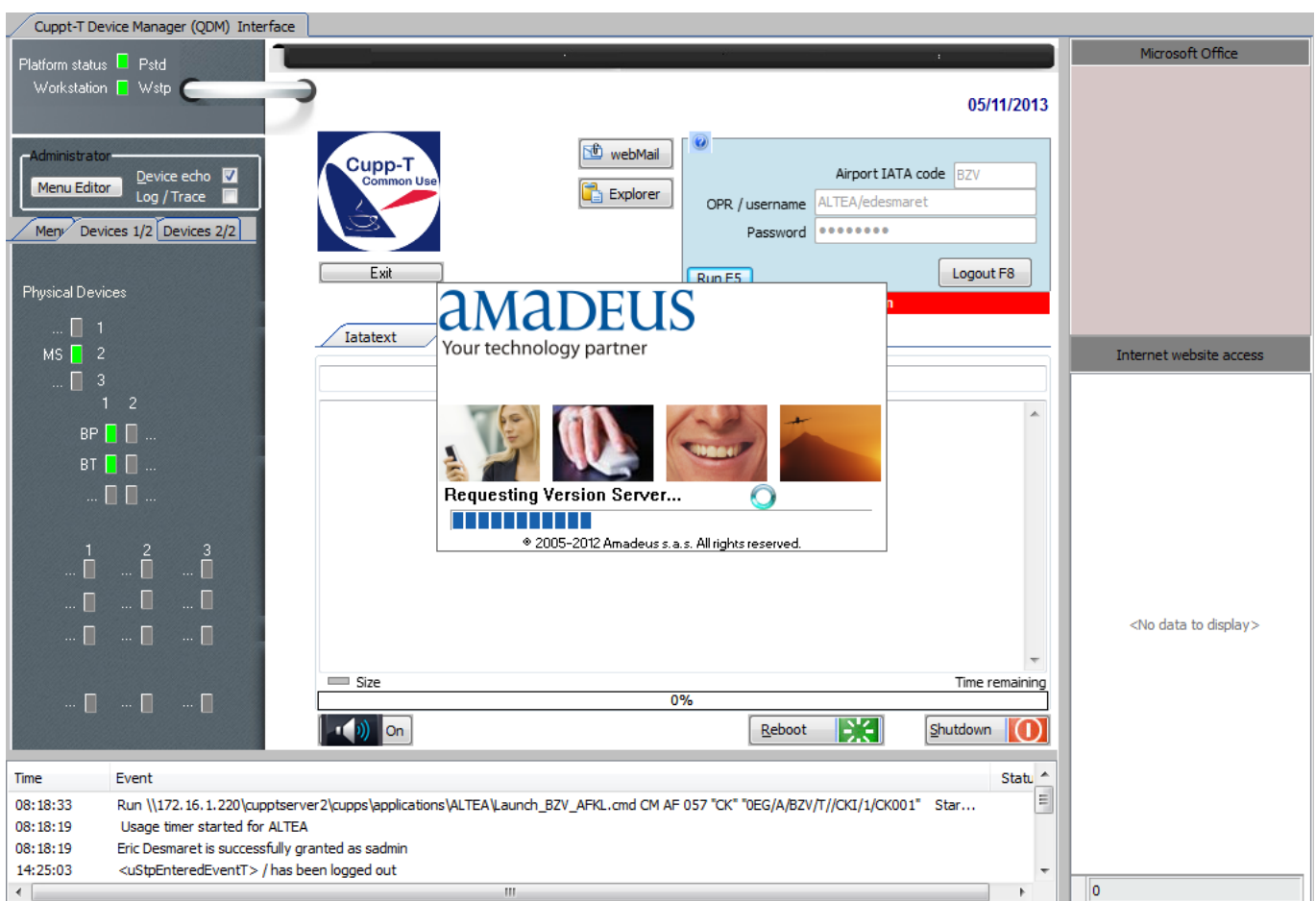
Just select a vendor and model from the list of CUPPS certified hardware to add or replace a device (Boarding pass or boarding tag printer, passport reader, magnetic card reader, etc.).

Competitive opening

Cupp-T **does not use proprietary firmware** for the devices. Thus, when the hardware needs to be replaced, the airport management has the full freedom of choice for any device vendor or model they intend to buy.

Example of ALTEA

In the example below, the departure control application “ALTEA DC” is launched by Cupp-T.



{{cuppt_Image_6.png}} SuperVision

Supervision Station

In Back Office, SuperVision allows IT staff to monitor the correct functioning of each workstation and running applications on Cuppt-T platform. workstation.

The tool can take control of each screen and complete the following operations:

1. stop;
2. restart;
3. remote control for technical support and training purposes;
4. monitoring of
5. processes and memory resources

Example of CUPPS



SuperVision allows administration of several platforms. It can be used in two modes for Edge-airport solutions:

1. supervision of the Cupp-T system (IATA CUPPS platform);
2. supervision for FiDS , the flight information display system.

From:

<https://oldwiki.embross-airport-services.com/> - **Documentation Embross (ex Edge Airport)**

Permanent link:

<https://oldwiki.embross-airport-services.com/doku.php?id=en:solutions:cuppt&rev=1504794794>

Last update: **07/09/2017 16:33**

Edge Airport France

Airport Manager Solutions

Phone: +33 553 801 366

Service commercial : contact@edge-airport.com

Support technique : support@edge-airport.com

Edge Airport France SAS au capital de 150 000 €

RCS Bergerac 529 125 346 Les Lèches TVA : FR53529125346 / EORI : FR52912534600039

Tel : +33(0)553 801 366 contact@edge-airport.com www.edge-airport.com