

# Cupp-T - IATA CUPPS Platform

Edge Airport France



---

# Table of Contents

- Cupp-T - IATA CUPPS Platform** .....
- IATA CUPPS Platform*** .....
- Common Use Passenger Processing Technology .....
- General .....
- Simple to Use Interface .....
- Features .....
- Configuring Peripherals .....
- Naming standard of peripherals as per IATA/CUPPS norm .....
- Competitive opening .....
- Example of ALTEA .....
- SuperVision*** .....
- Supervision Station*** .....
- Edge Airport France** .....



# Cupp-T - IATA CUPPS Platform



## IATA CUPPS Platform

### Common Use Passenger Processing Technology

IATA recommended practice 1797

- Security:
  - authentication of the users;
  - only applications authorized by the platform can be run;
  - secure access to printers, boarding card readers and other peripherals.
- Interoperability & compatibility:
  - portable applications Load and Play (LnP);
  - web hosted applications;
  - permits the use of peripherals without proprietary firmware.
- IATA / CUPPS certified

### General

Cupp-T is a high-performance platform which facilitates airlines, ground handlers or other operators to share common physical check-in, gate or back and front-office positions, and the associated peripherals, improving the efficiency of airport resources.

Airport Manager Cupp-T supports any CUPPS compliant application including but not limited to:

- DCS (Departure Control System) for airlines;
- Local-Departure Control System like Airport Manager L-DCS;
- Back office Applications;
- Other Operational Applications.

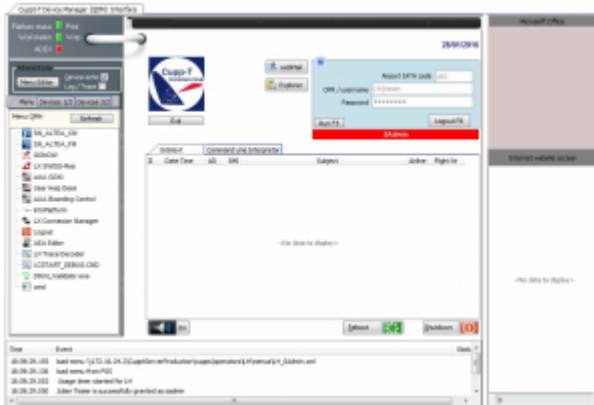
Certified to IATA / CUPPS version 01.03 revision 9.

Supports the all major DCS for airlines:

- ALTEA ©Amadeus
- GAETAN ©Air France
- Lufthansa Cute Future ©Brussels Airlines
- MACS © Emirates
- TROYA © Turkish Airlines
- Local DCS Airport Manager used by Air Corsica and many lowcost airlines like Ryanair, flyBE, Transavia, EasyJet, etc

- all DCS applications conforming to the IATA / CUPPS norm.

## Simple to Use Interface



Cupp-T: A modern and secure interface. In secure mode, only administrators have access to 'Windows' desktop.

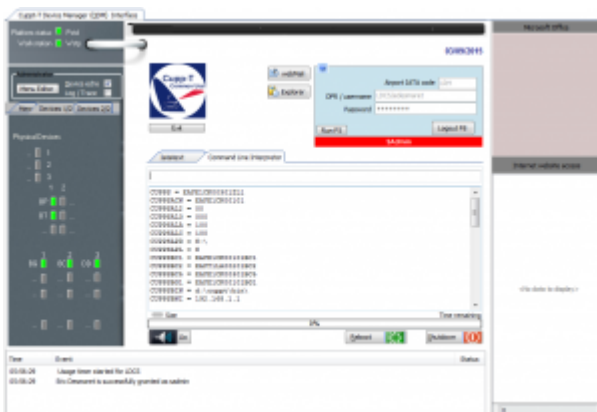
## Features

In addition to hosting airline applications, Cupp-T offers advanced functions:

- launching Microsoft office applications – Word, Excel, PowerPoint, etc.;
- controlled access to a list of websites defined by the system administrator;
- dynamic creation of multiple menus per operator and per user group;
- controlled access to webmail;
- configuring devices in just a few clicks.

## Configuring Peripherals

Cupp-T allows system administrator to manage the devices.

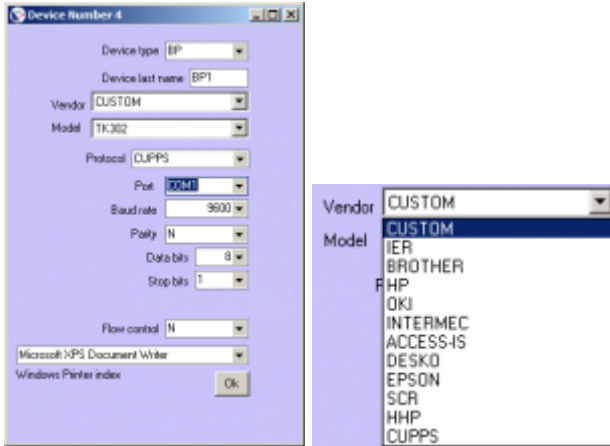


## Naming standard of peripherals as per IATA/CUPPS norm

BP	Boarding Pass Printer	MS	Magnetic Swipe reader
----	-----------------------	----	-----------------------

BT	Bag Tag Printer	OC	Optical Character reader
BG	Boarding Gate reader	PR	Document Printer
BC	Bar Code Reader		
DD	Display Device		

The configuration of a device takes a few clicks using the following window:



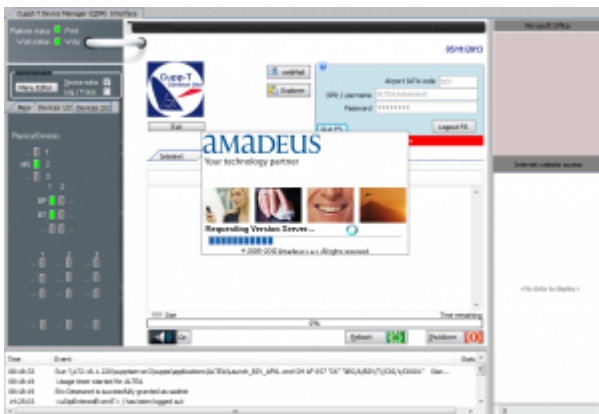
Just select a vendor and model from the list of CUPPS certified hardware to add or replace a device (Boarding pass or boarding tag printer, passport reader, magnetic card reader, etc.).

### Competitive opening

Cupp-T **does not use proprietary firmware** for the devices. Thus, when the hardware needs to be replaced, the airport management has the full freedom of choice for any device vendor or model they intend to buy.

### Example of ALTEA

In the example below, the departure control application “ALTEA DC” is launched by Cupp-T.



# SuperVision



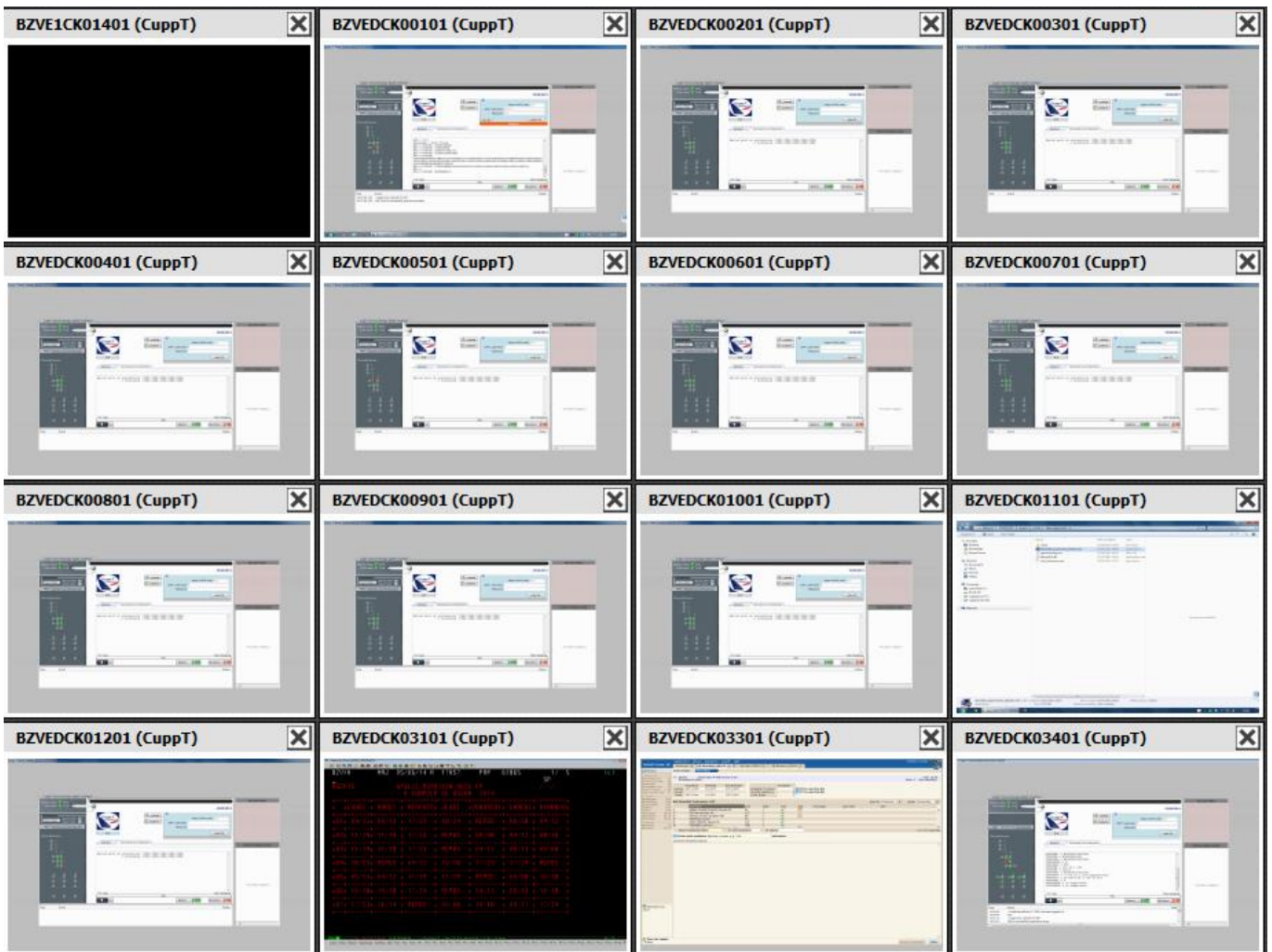
## Supervision Station

In Back Office, SuperVision allows IT staff to monitor the correct functioning of each workstation and running applications on Cupp-T platform. workstation.

The tool can take control of each screen and complete the following operations:

1. stop;
2. restart;
3. remote control for technical support and training purposes;
4. monitoring of
5. processes and memory resources

Example of CUPPS



SuperVision allows administration of several platforms. It can be used in two modes for Edge-airport solutions:

1. supervision of the Cupp-T system (IATA CUPPS platform);
2. supervision for FiDS , the flight information display system.

From:

<https://oldwiki.embross-airport-services.com/> - **Documentation Embross (ex Edge Airport)**

Permanent link:

<https://oldwiki.embross-airport-services.com/doku.php?id=en:solutions:cuppt&rev=1504794984> 

Last update: **07/09/2017 16:36**

# Edge Airport France

## Airport Manager Solutions

**Phone: +33 553 801 366**

**Service commercial : [contact@edge-airport.com](mailto:contact@edge-airport.com)**

**Support technique : [support@edge-airport.com](mailto:support@edge-airport.com)**

**Edge Airport France SAS au capital de 150 000 €**

**RCS Bergerac 529 125 346 Les Lèches TVA : FR53529125346 / EORI : FR52912534600039**

**Tel : +33(0)553 801 366 [contact@edge-airport.com](mailto:contact@edge-airport.com) [www.edge-airport.com](http://www.edge-airport.com)**