

# **IATAText - Aeronautical Message System**

**Edge Airport France**



## Table of Contents

<b>IATAText - Aeronautical Message System</b> .....	
<i>Technical description</i> .....	
<b>Edge Airport France</b> .....	



# IATAText - Aeronautical Message System



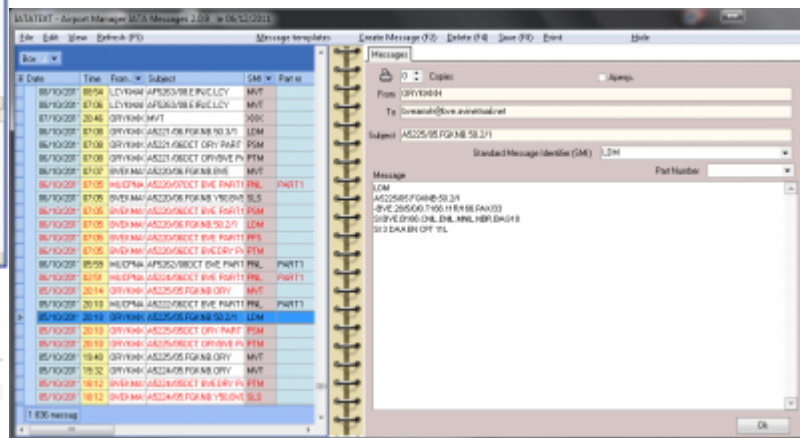
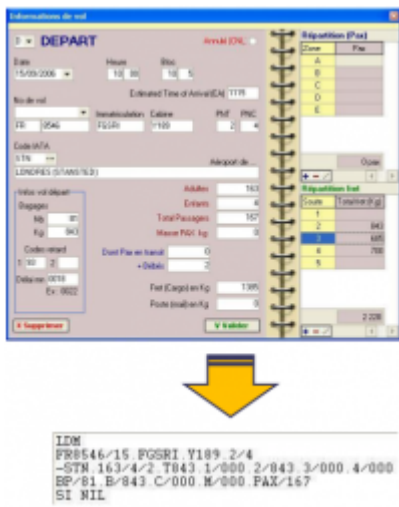
## Technical description

The «IATATEXT» software allows the sending and receiving of Type-B operational messages.

It is fundamental to the functioning of DCS in order to receive PNL/ADL messages to the address of the type xxxAMX. During flight closure of LDCS, IATAText facilitates sending of messages of the type PFS, LDM, PRL, PTM, ETL, etc.

The IATATEXT interface also allows manual sending of any other operational messages.

IATATEXT gère parfaitement la double-signature afin que les messages émis pour le compte des compagnies aériennes ne soient pas facturés à l'aéroport mais aux compagnies.



From:

<https://oldwiki.embross-airport-services.com/> - **Documentation Embross (ex Edge Airport)**

Permanent link:

<https://oldwiki.embross-airport-services.com/doku.php?id=en:solutions:iatatext1>



Last update: **08/10/2018 15:04**

# Edge Airport France

## Airport Manager Solutions

**Phone: +33 553 801 366**

**Service commercial : [contact@edge-airport.com](mailto:contact@edge-airport.com)**

**Support technique : [support@edge-airport.com](mailto:support@edge-airport.com)**

**Edge Airport France SAS au capital de 150 000 €**

**RCS Bergerac 529 125 346 Les Lèches TVA : FR53529125346 / EORI : FR52912534600039**

**Tel : +33(0)553 801 366 [contact@edge-airport.com](mailto:contact@edge-airport.com) [www.edge-airport.com](http://www.edge-airport.com)**