

Edge Airport France



Table of Contents

IATAText - Aeronautical Message System

Technical description

Edge Airport France

IATAText - Aeronautical Message System



Technical description

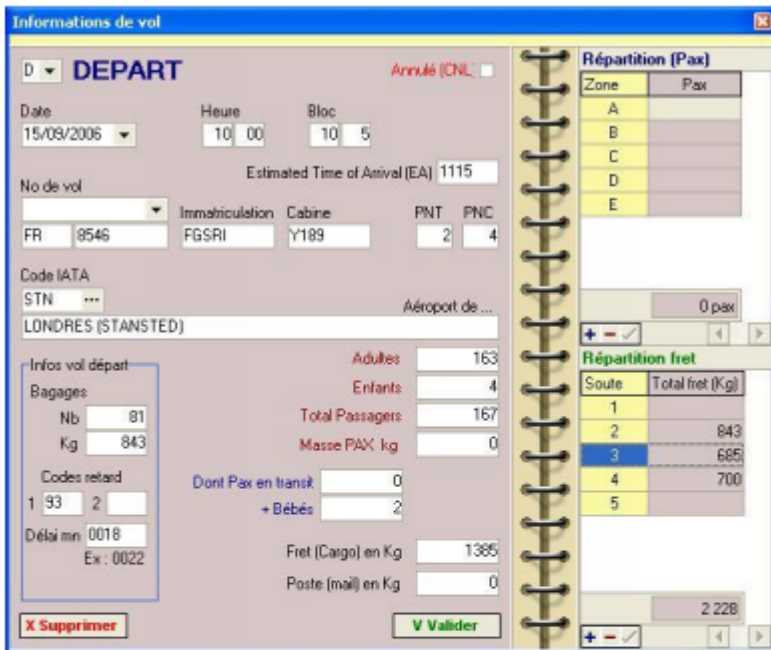
The «IATATEXT» software allows the sending and receiving of Type-B operational messages.

It is fundamental to the functioning of DCS in order to receive PNL/ADL messages to the address of the type xxxAMX. During flight closure of LDCS, IATAText facilitates sending of messages of the type PFS, LDM, PRL, PTM, ETL, etc.

The IATATEXT interface also allows manual sending of any other operational messages.



IATATEXT is capable of double-signature so that messages sent on behalf of airlines are not invoiced to airport, but directly to the airlines.



The screenshot shows the 'Informations de vol' window with the following data:

- DEPART** (Arrivé (ENL) checkbox)
- Date: 15/09/2006, Heure: 10:00, Bloc: 10:5
- Estimated Time of Arrival (EA): 1115
- No de vol: FR 9546, Immatriculation: FGSRI, Cabine: Y189, PNT: 2, PNC: 4
- Code IATA: STN ...
- Aéroport de: LONDRES (STANSTED)
- Infos vol départ:
 - Adultes: 163
 - Enfants: 4
 - Total Passagers: 167
 - Masse PAX kg: 0
 - Dont Pax en transk: 0
 - + Bébés: 2
 - Fret (Cargo) en Kg: 1385
 - Poste (mail) en Kg: 0
- Bagages: Nb: 81, Kg: 843
- Codes retard: 1: 33, 2: ...
- Délai min: 0018, Ex: 0022
- Buttons: X Supprimer, V Valider

Répartition (Pax) Table:

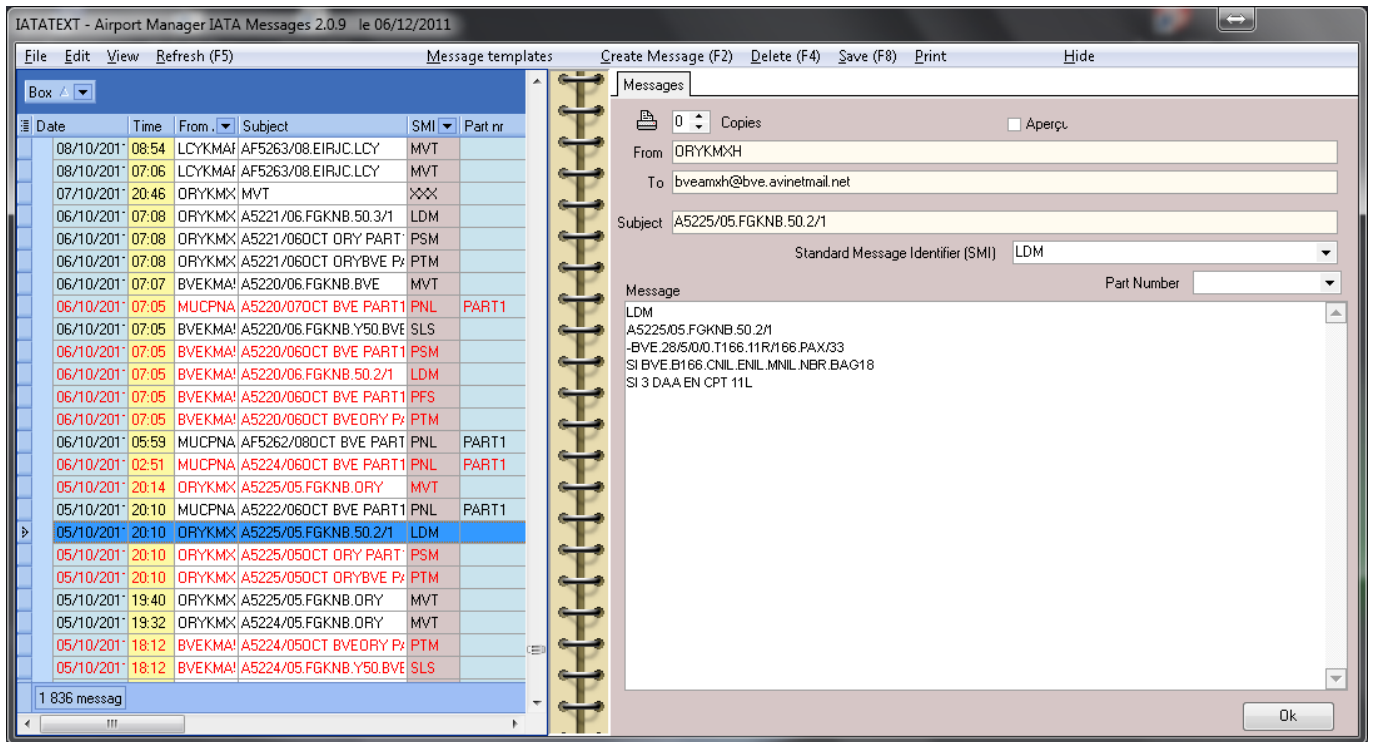
Zone	Pax
A	
B	
C	
D	
E	

Répartition fret Table:

Soute	Total fret (Kg)
1	
2	843
3	685
4	700
5	



```
LDM
FR8546/15.FGSRI.Y189.2/4
-STN.163/4/2.T843.1/000.2/843.3/000.4/000
BP/81.B/843.C/000.M/000.PAX/167
SI NIL
```



From: <https://oldwiki.embross-airport-services.com/> - **Documentation Embross (ex Edge Airport)**

Permanent link: <https://oldwiki.embross-airport-services.com/doku.php?id=en:solutions:iatatextmenu:presiatatext&rev=1504795893>

Last update: **07/09/2017 16:51**

Edge Airport France

Airport Manager Solutions

Phone: +33 553 801 366

Service commercial : contact@edge-airport.com

Support technique : support@edge-airport.com

Edge Airport France SAS au capital de 150 000 €

RCS Bergerac 529 125 346 Les Lèches TVA : FR53529125346 / EORI : FR52912534600039

Tel : +33(0)553 801 366 contact@edge-airport.com www.edge-airport.com