

L-DCS - Local Departure Control System

Edge Airport France



Table of Contents

- L-DCS - Local Departure Control System**
- Features**
- Description
- Weight & balance**
- LDCS - Main Screen
- Cabin Plans**
- PNL -Integrating passenger lists**
- Check-in
- Automatic flight selection
- Boarding
- Loadsheet
- Edge Airport France**

L-DCS - Local Departure Control System



IATA / CUPPS compliant

Features

- integration of IATA messages - PNL, ADL...;
- graphical management of cabin plans;
- passenger tracking (PAXTracer);
- supports APIS and EBorders ;
- generating and sending operational messages PFS, LDM, FTL, ETL ...;
- baggage reconciliation;
- Weight & Balance;
- generate load sheets.

Description

Airport Manager LDCS is a passenger check-in system for low-cost airlines. Chaque banque d'enregistrement peut gérer simultanément plusieurs vols. Each check-in workstation desk can simultaneously register several flights.

The programme is compatible with the use of multiple peripherals.

- MS : Magnetic Swipe Reader ;
- OC : LePassport Readers (Optical Character Reader) ;
- BC : Bar Code Reader;
- BP : Boarding Pass Printer (BPP) ;
- BT : Baggage Tag Printer (ATB);
- BG : Boarding Gate Reader (BGR) ;
- PR : Matrix printers for operational documents.

Weight & balance

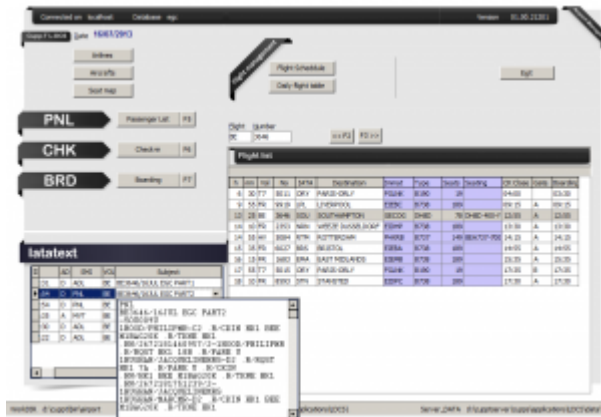
The L-DCS includes a «Weight & Balance» module, allowing the calculation of load and trim results. It calculates the load and trim and produces the plane loading expressed in %MAC. The results are sent in Excel spreadsheets, which produces a load sheet.

Use of 'Weight & Balance "module is subject to the certification requirements between Edge-airport and airlines.

LDCS - Main Screen

Flight list per day

IATA Messages for each flight



Cabin Plans

The graphic tool facilitates the creation of a cabin plan:

- management of 2 flight decks (principal and superior (B747 or A380));
- multi-classing of passengers;
- positioning of emergency exits;
- blocking of seats;
- zone management



Automatic flight selection

By reading a passenger's passport, the program will automatically find the flight on which the passenger is travelling.

The screenshot shows the 'Airport Manager LDCS Check-in' interface. The main window displays flight information for BE 3646, departing SOUTHAMPTON at 13:25 on 16/07/2013. The passenger's name is CHOUCH, MAHEMI. The interface includes fields for passport details, flight status, and baggage information. A table at the bottom shows the baggage details:

kg	DAK
12.7	0
8	0
5	3

Boarding

L-DCS provides the ability to connect up to 3 BGRs thus allowing fast boarding. The 3rd BGR can be a wireless barcode reader or an automatic gate.

The software can also be used without BGR. Just enter the sequence number of each boarding pass to board a passenger.



Loadsheet

For companies certified to the "Weight & Balance" system, it is possible to generate loadsheet in Excel files.



From:

<https://oldwiki.embross-airport-services.com/> - **Documentation Embross (ex Edge Airport)**

Permanent link:

<https://oldwiki.embross-airport-services.com/doku.php?id=en:solutions:ldcs1&rev=1504873195>

Last update: **08/09/2017 14:19**

Edge Airport France

Airport Manager Solutions

Phone: +33 553 801 366

Service commercial : contact@edge-airport.com

Support technique : support@edge-airport.com

Edge Airport France SAS au capital de 150 000 €

RCS Bergerac 529 125 346 Les Lèches TVA : FR53529125346 / EORI : FR52912534600039

Tel : +33(0)553 801 366 contact@edge-airport.com www.edge-airport.com