

L-DCS - Local Departure Control System

Edge Airport France

Table of Contents

L-DCS - Local Departure Control System

Features

 Description

Weight & balance

 LDCS - Main Screen

Cabin Plans

PNL -Integrating passenger lists

 Check-in

 Automatic flight selection

 Boarding

 Loadsheet

Edge Airport France

L-DCS - Local Departure Control System



IATA / CUPPS compliant

Features

- graphical management of cabin plans;
- integration of IATA messages - PNL, ADL...;
- supports APIS and EBorders ;
- passenger tracking (PAXTracer);
- baggage reconciliation;
- flight documents;
- generating and sending operational messages PFS, LDM, FTL, ETL ...;
- Weight & Balance;
- calculate CG expressed in %MAC;
- generate load sheets.

Description

Airport Manager LDCS is a passenger check-in system for low-cost airlines. Chaque banque d'enregistrement peut gérer simultanément plusieurs vols. Each check-in workstation desk can simultaneously register several flights.

The programme is compatible with the use of multiple peripherals.

- MS : Magnetic Swipe Reader ;
- OC : LePassport Readers (Optical Character Reader) ;
- BC : Bar Code Reader;
- BP : Boarding Pass Printer (BPP) ;
- BT : Baggage Tag Printer (ATB);
- BG : Boarding Gate Reader (BGR) ;
- PR : Matrix printers for operational documents.

Weight & balance

The L-DCS includes a «Weight & Balance» module, allowing the calculation of load and trim results. It calculates the load and trim and produces the plane loading expressed in %MAC. The results are sent in Excel spreadsheets, which produces a load sheet.

Use of 'Weight & Balance "module is subject to the certification requirements between Edge-airport and airlines.

LDCS - Main Screen

Flight list per day

IATA Messages for each flight

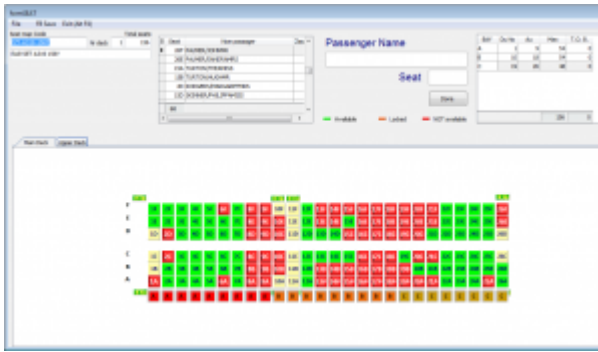


Cabin Plans

The graphic tool facilitates the creation of a cabin plan:

- management of 2 flight decks (principal and superior (B747 or A380));
- multi-classing of passengers;
- positioning of emergency exits;
- blocking of seats;
- zone management



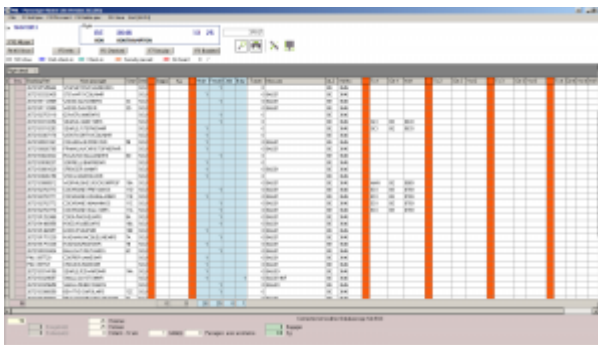


PNL -Integrating passenger lists

LDCS integrates the PNL and ADL messages and thus generates the passengers list. With this tool, it just takes couple minutes to prepare flights on LDCS.

The advantage of this functionality is the automatic recuperation of the following data:

- sequence number for the passengers checked-in online (web check-in);
- name of each passenger and reservation reference or number on E-ticket;
- seat number;
- count of men, women, children (-12 years) and babies;
- specific information (prepaid baggage, wheelchairs ...);
- connecting flights (allows bag tag printing to the final destination).



Check-in

Passenger check-in, boarding passes and bag tags printing is facilitated by ergonomics of the software.

Passenger search can be done in several ways:

- by passing the passenger's passport in the reader;
- by partially composing first few letters of name;
- by displaying passenger list (PNL).

Automatic flight selection

By reading a passenger's passport, the program will automatically find the flight on which the passenger is travelling.

Boarding

L-DCS provides the ability to connect up to 3 BGRs thus allowing fast boarding. The 3rd BGR can be a wireless barcode reader or an automatic gate.

The software can also be used without BGR. Just enter the sequence number of each boarding pass to board a passenger.

Airport Manager LDCS Boarding version 213.D1a

Le 16/07/2013 197 F3 Sequence F5 Voir tous les pax F7 P.I.L. Print Manifest Platform Node 192.168.28.1
DMTE1CK00201 Pax tracer 4

PM Peripheral Manager
BP1 BG1 PR1 ...
BG1 ...
BT1 ...

Pax selection by SEAT Print boarding pass

Aperçu

Flight detail
BE 3646 13:25
SOU SOUTHAMPTON 16/07/2013 378127

NO show Web check-in Check-in Security passed On board

Seq	Nom passager	Nat	Class	Seat	Dest	Bag(s)	Kg	Pax tracer
	HUGHAN/MARCMR		7B	SOU				0
	BALLISAT/RUTHMISS		6C	SOU				0
	COOPER/JAMESMR			SOU				0
	CROUCH/MARKMR			SOU				0
	SEARLE/EDWARDMR		14A	SOU				0
	SMALL/JAYSTONMR			SOU				0
	SMALL/REBECCAMRS			SOU				0
	BEATTIE/CAROLMRS		12C	SOU				0
	BEAUCHAMP/JONATHANDR		6A	SOU				0
	BURKE/ANNEMRS			SOU				0
	BURKE/JULIANMR			SOU				0
	CAHILL/NIAMHMISS		18C	SOU				0
	COYNE/LORNAMS			SOU				0
	HARFIELD/BARRYMR		.RN	SOU				0
	HARFIELD/MICHAELMR		21A	SOU				0
	HEALD/ANNADR		6B	SOU				0
	SNELL/ADRIANMR			SOU				0
	STEPHEN/CHRISTINEMRS			SOU				0
	STEPHEN/IANMR			SOU				0
	WICKHAM/PETERMR			SOU				0
	WYCKMANS/DAVIDMR			SOU				0
	WYCKMANS/SUSANMRS			SOU				0
	LORD/HUGOMR			SOU				0
1	BLOOD/FIONAMRS	Y	12B	SOU				2
2	COCHRANE/FREYAMISS	Y	11D	SOU				4

Sequence (F3) P.I.L. 56 / C.H.K. 2 / P.A.X. 1 Flight

Pax Name **COCHRANE/FREYAMISS**

Booking Reference **OK**

2

Siège / Seat Classe

Boarding Gate Reader 1 Boarding Gate Reader 2 Boarding Gate Reader 3

Time	Event	Status

d:\cuppt\bin\airport

Loadsheet

For companies certified to the "Weight & Balance" system, it is possible to generate loadsheet in Excel files.

Edge Airport France

Airport Manager Solutions

Phone: +33 553 801 366

Service commercial : contact@edge-airport.com

Support technique : support@edge-airport.com

Edge Airport France SAS au capital de 150 000 €

RCS Bergerac 529 125 346 Les Lèches TVA : FR53529125346 / EORI : FR52912534600039

Tel : +33(0)553 801 366 contact@edge-airport.com www.edge-airport.com