



FIDS

Flight Information Display System
Passengers information



Time	Flight	Origin	Destination	Status
00:50	AF 800	CASABLANCA	PARIS	On time
09:15	AF 873	REYNOUTH / LAGOS	LAGOS	On time
10:35	AF 870	COUACOUACOU / BOBO DIULASSO	BOBO DIULASSO	On time
11:40	AF 820	NADORO	NADORO	On time
18:25	AF 820	NOUAKHOTT / ACCA	NOUAKHOTT	On time
19:20	AF 801	ADDIS ABABA / LOHE	ADDIS ABABA	On time
19:15	AF 800	BRUXELLES	PARIS	On time

One-size-fits-all solution

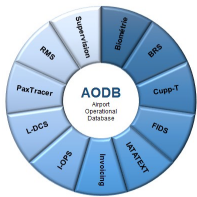
Edge-airport FiDS is multilingual and displays, in real time, the flight information and flight status on arrival and/or departure. Each screen has a customized display on the basis of its location and its utility.

Flexible and simple to implement/ install /use

With its simple and ergonomic user interface, each screen display can be controlled individually or in combination by integrating the screen into a set of screens.

You choose how, where and when where, when and how the information should be presented for better passenger experience.

Terminal	Event Description	Area	Time	HTML File	Page 1
T1	005 Departure (0) Domestique	T10 Check-in	00:00	OK_allflights.html	Y19140
T1	005 Departure (0) Domestique	T10 Check-in	00:00	OK_allflights.html	Y19134
T1	005 Departure (0) Domestique	T10 Check-in	00:00	OK_allflights.html	Y19134
T1	005 Departure (0) Domestique	T10 Check-in	00:00	OK_allflights.html	Y19132
T1	005 Departure (0) Domestique	T10 Check-in	00:00	OK_allflights.html	Y19142
T1	005 Departure (0) Domestique	T10 Check-in	00:00	OK_allflights.html	Y19142

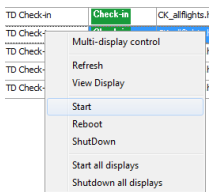


Automatic update of flight information

The data collected by Edge-airport FiDS comes from the AODB (Airport Operational Database) and is updated automatically in real time.

Export to HTML and XML format

Flight information is exported to the airport's website(s) allowing users to have real-time flight information without any additional system and at no extra cost.



Cost reduction

Edge-airport FiDS offers automatic switching on/off of display screens, thus generating substantial cost savings

Additional source of income

The display screens can also be used to broadcast promotional videos or tourist information, thus generating additional revenue for the airport.



Add-on modules

Edge-airport FiDS integrates seamlessly with other L-DCS (departure control), Cupp-T (IATA CUPPS platform), AMInvoicing (billing, accounting, statistics) and SuperVision.