



IATAText

Type-B messaging

Send & receive type-B messaging



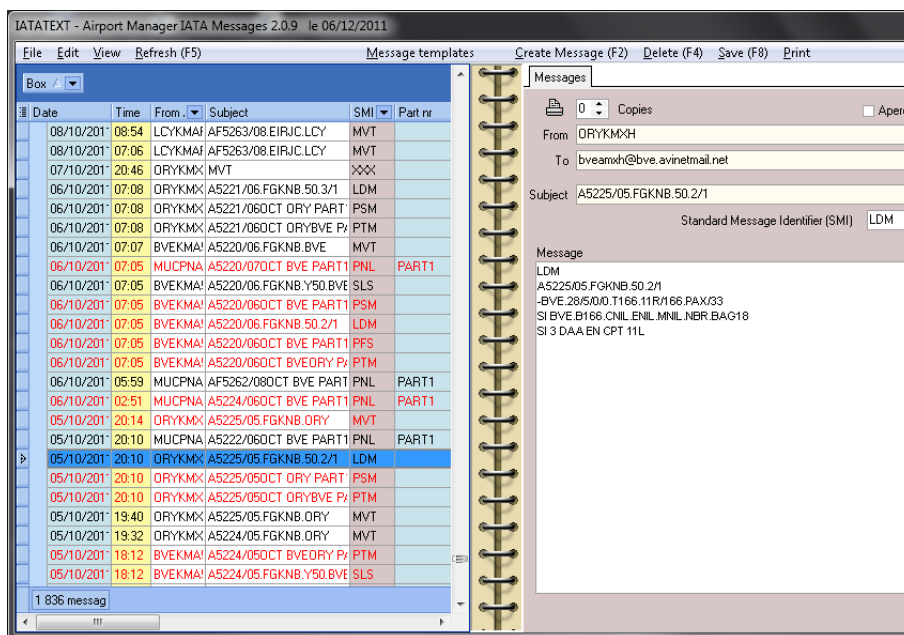
The «IATATEXT» software allows the sending and receiving of Type-B operational messages.

It is fundamental to the functioning of DCS in order to receive PNL/ADL messages to the address of the type xxxAMX. During flight closure of LDCS, IATAText facilitates sending of messages of the type PFS, LDM, PRL, PTM, ETL, etc.

The IATATEXT interface also allows manual sending of any other operational messages.



IATATEXT is capable of double-signature so that messages sent on behalf of airlines are not invoiced to airport, but directly to the airlines.



```
LDM
FR8546/15.FGSRI.Y189.2/4
-STN.163/4/2.T843.1/000.2/843.3/000.4/000
BP/81.B/843.C/000.M/000.PAX/167
SI NIL
```